



Moore Home

N 39° 23.741 W 88° 12.670

The Reuben Moore Home State Historic Site stands among the remnants of Farmington, a village one mile north of Lincoln Log Cabin. In late 1856, Reuben Moore built this house and moved in with his new wife Matilda Hall (Abraham Lincoln's stepsister). After Reuben's death in 1859, Matilda lived in the frame house for several years. In January of 1861, Abraham Lincoln bid farewell to his stepmother at the Moore home on his way to the White House.

Q: What year was the blue metal sign erected and by whom?

The second number of the year in which the sign was erected equals the value for C.

If you are a member of geocaching.com, be sure to hunt for the cache located nearby!



Lincoln Log Cabin State Historic Site

N 39° 22.767 W 88° 12.156

The original Thomas Lincoln cabin was lost following its move to the Columbian Exposition in 1892. The existing cabin is an accurate replica of that cabin, reconstructed on its original site after the State of Illinois acquired the land in 1929. The cabin is furnished with items and artifacts of the 1840s, though none are known to have belonged to the Lincolns.

Be sure to visit the Sargent Farm as well, which portrays the practices of a farmer strongly influenced by progressive agricultural literature of the 1840s.



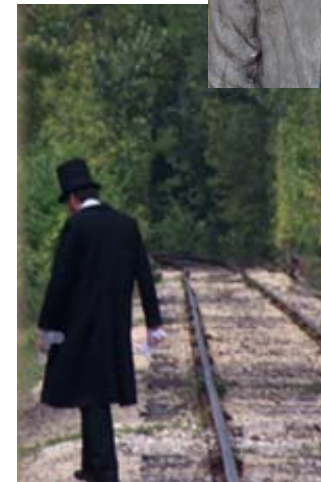
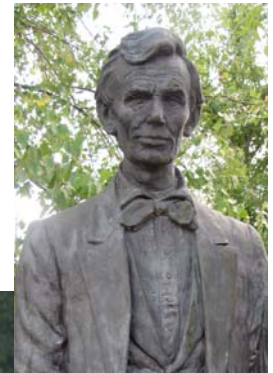
Q: How many blue doors are on the structure located to the south?

Number of doors – number of windows – number of chimneys = F

Answer all of the questions and use the answers to fill in the coordinates for one more Lincoln attraction nearby!

N 39° 31.ABC W 88° 0D.EF1

WALK WHERE LINCOLN WALKED: A Virtual GPS Tour



ON THE TRAIL OF LINCOLN...

THE FOLLOWING GPS COORDINATES LEAD YOU ON A TOUR OF NOTABLE LOCATIONS AROUND CHARLESTON, ILLINOIS, WHERE ABRAHAM LINCOLN VISITED. THERE ARE FIVE STOPS ON THE TOUR. IF YOU ANSWER THE QUESTIONS AT EACH LOCATION, THE COORDINATES FOR A FINAL BONUS LINCOLN ATTRACTION WILL BE REVEALED.

GOOD LUCK LOOKING FOR LINCOLN!

Courthouse Square

N 39° 29.673 W 88° 10.537

Charleston's Downtown Square has been the site of the Coles County seat since 1835. As a young lawyer, Abraham Lincoln practiced law in a previous version of the courthouse. Historic buildings display stunning architectural details and serve as home to current professional offices, unique shops and restaurants.

Q: On the north side of the sign, what can be seen in the lower right corner of the image (two words)?

Subtract the letters of the first word from the second word to find the value of A.



Lincoln-Douglas Debate Museum

N 39° 29.803 W 88° 11.223

This site is home to the only museum in Illinois that tells the story of one of the senatorial debates of 1858 between Abraham Lincoln & Stephen A. Douglas. The museum features exhibits that tell the story of the debate in Charleston through film-audio selections, interpretive exhibits, and photographs.

As you visit the site, walk outside and imagine the crowd of 12,000 gathering to hear the fourth Lincoln-Douglas debate on September 18, 1858.

Q: Find the month and year in which the metal sign by the front door was sponsored.

Subtract 8 from the value of the month to find the value for B.



Thomas Lincoln Cemetery

N 39° 23.277 W 88° 14.202

John Jake Gordon, one of the first settlers in Pleasant Grove Township, set aside one and a half acres of his privately owned land for this cemetery in the late 1830s. Thomas Lincoln was buried in the Gordon Graveyard in 1851 and his wife, Sarah Bush Lincoln, was buried next to him in 1869.

In 1935, the name of the cemetery was officially changed from Shiloh Cemetery to Thomas Lincoln Cemetery

Q: What line comes after "O'er some bow the sad weeping willow"?

D equals the number of words in the answer to the question.

E equals the number of letters in the last word on that same line.

